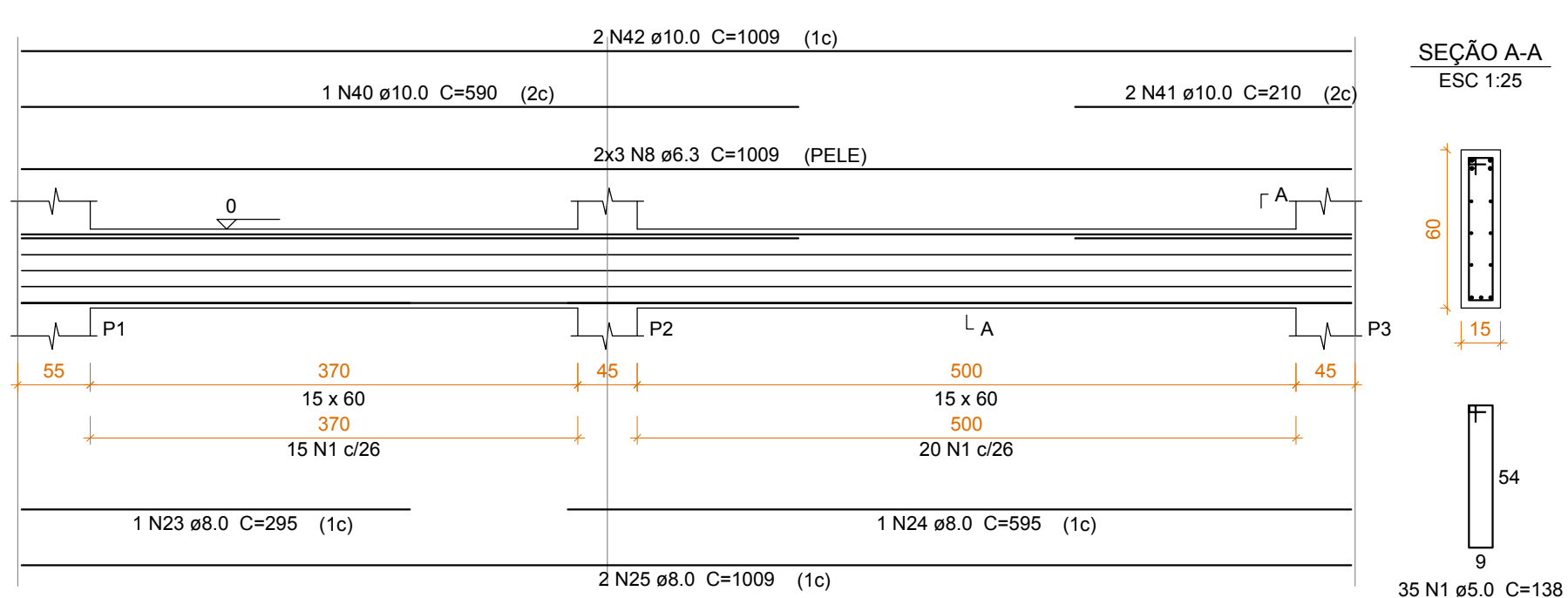


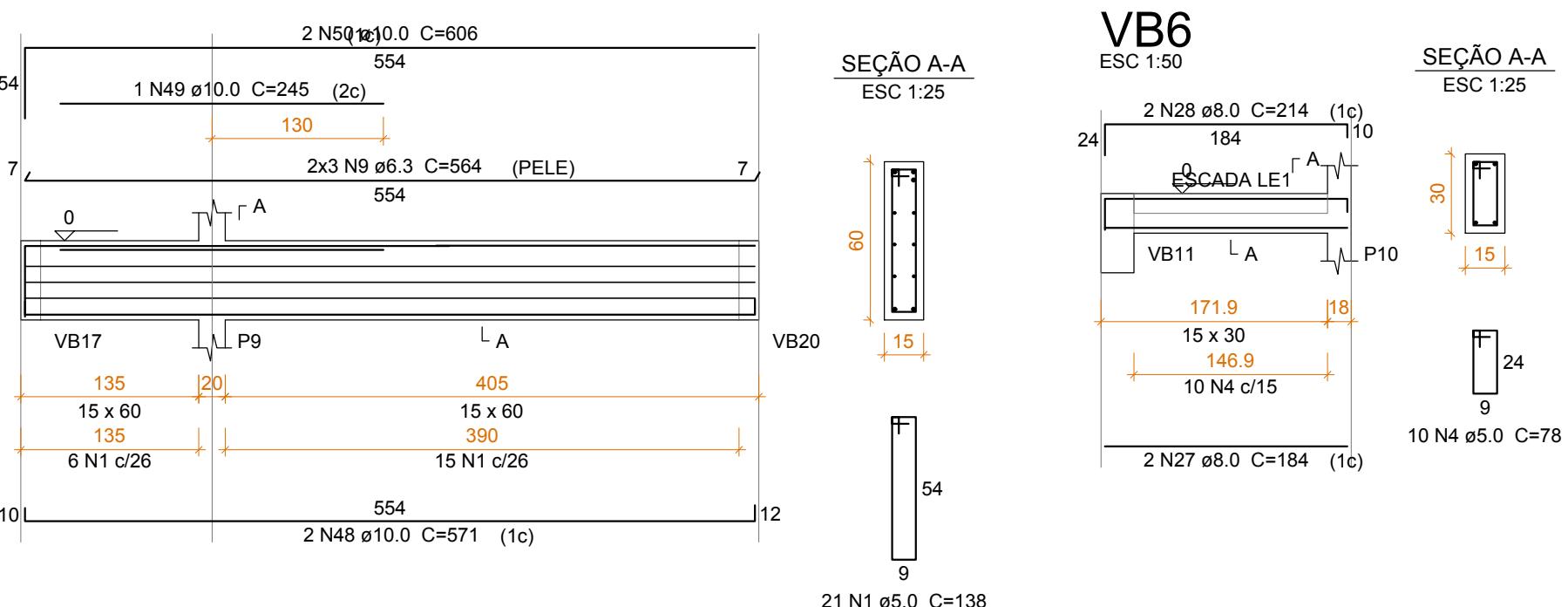
VB1

ESC 1:50



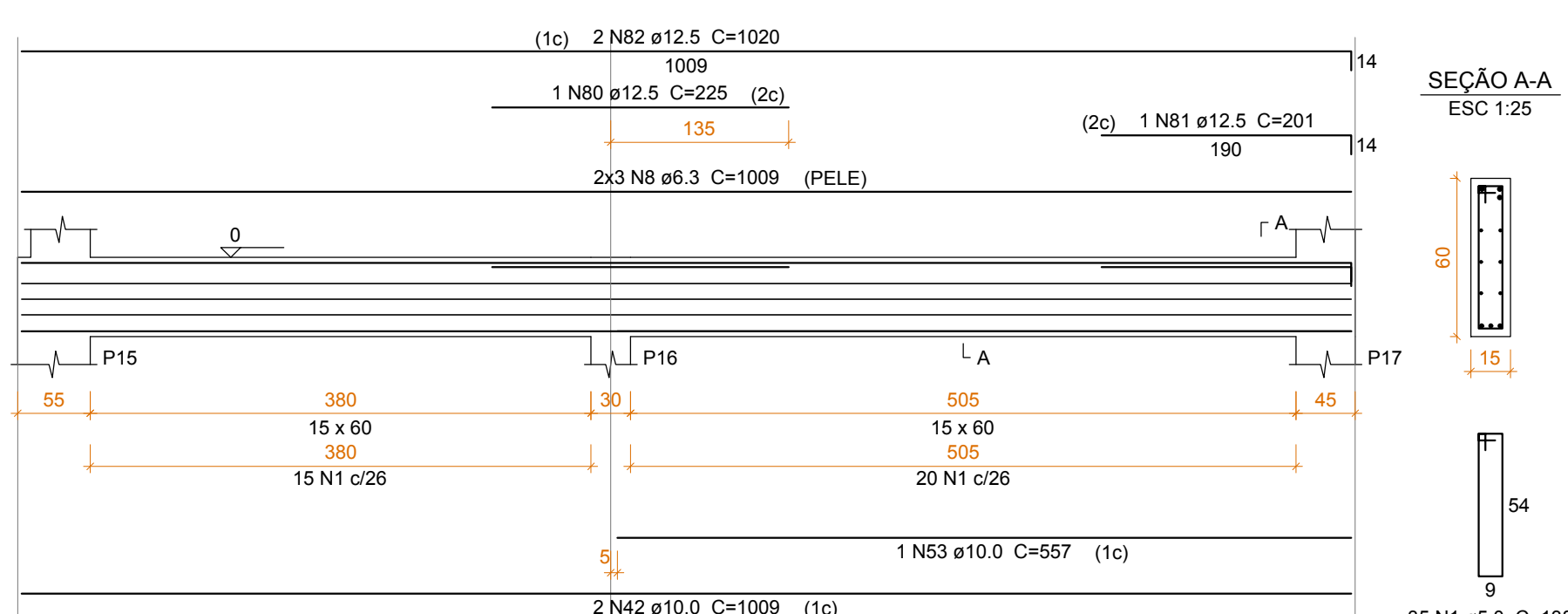
VB5

ESC 1:50



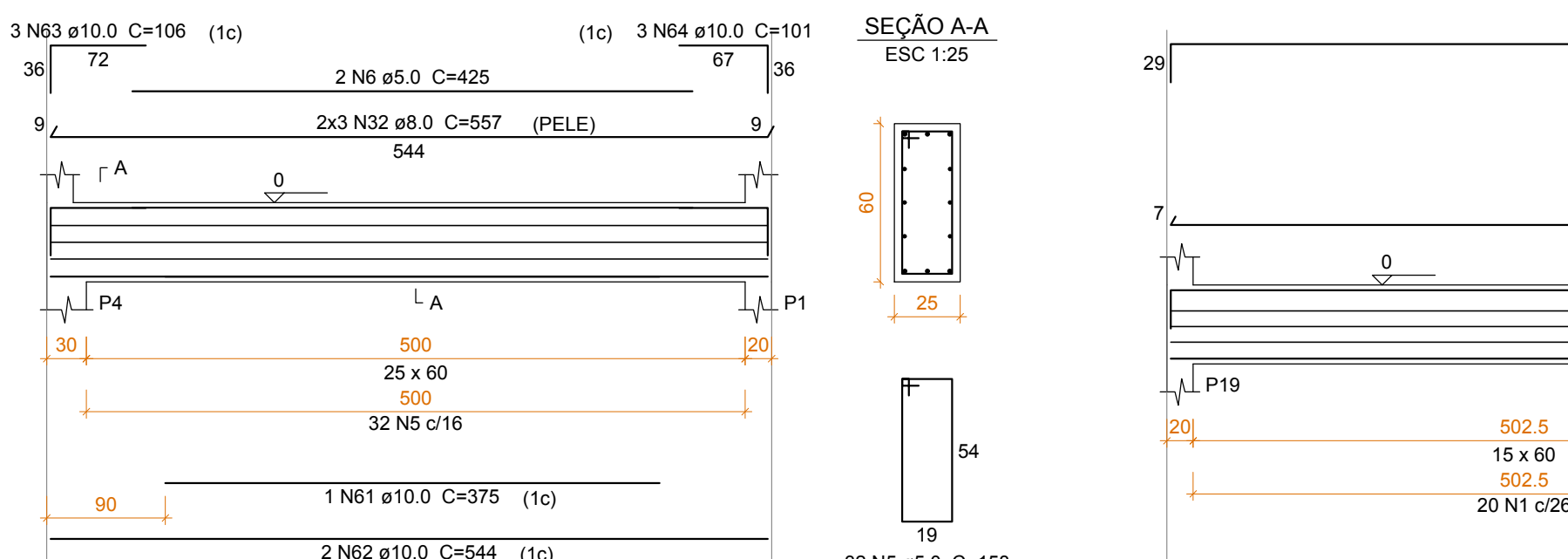
VB9

ESC 1:50



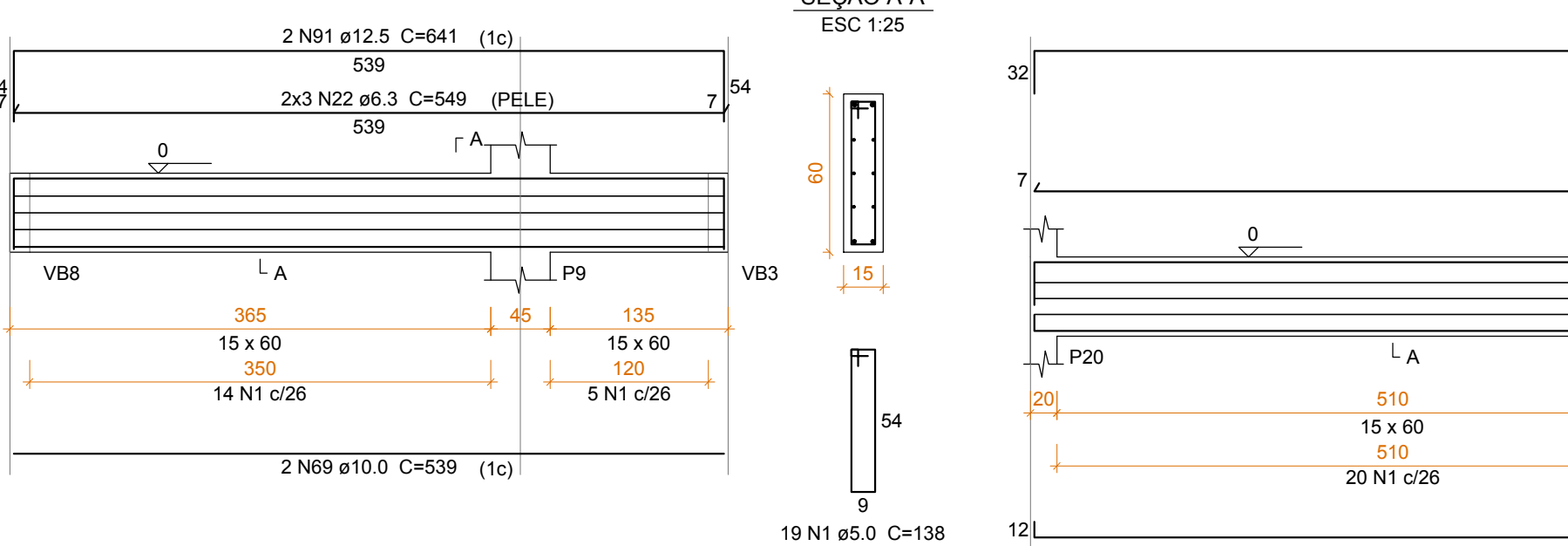
VB13

ESC 1:50



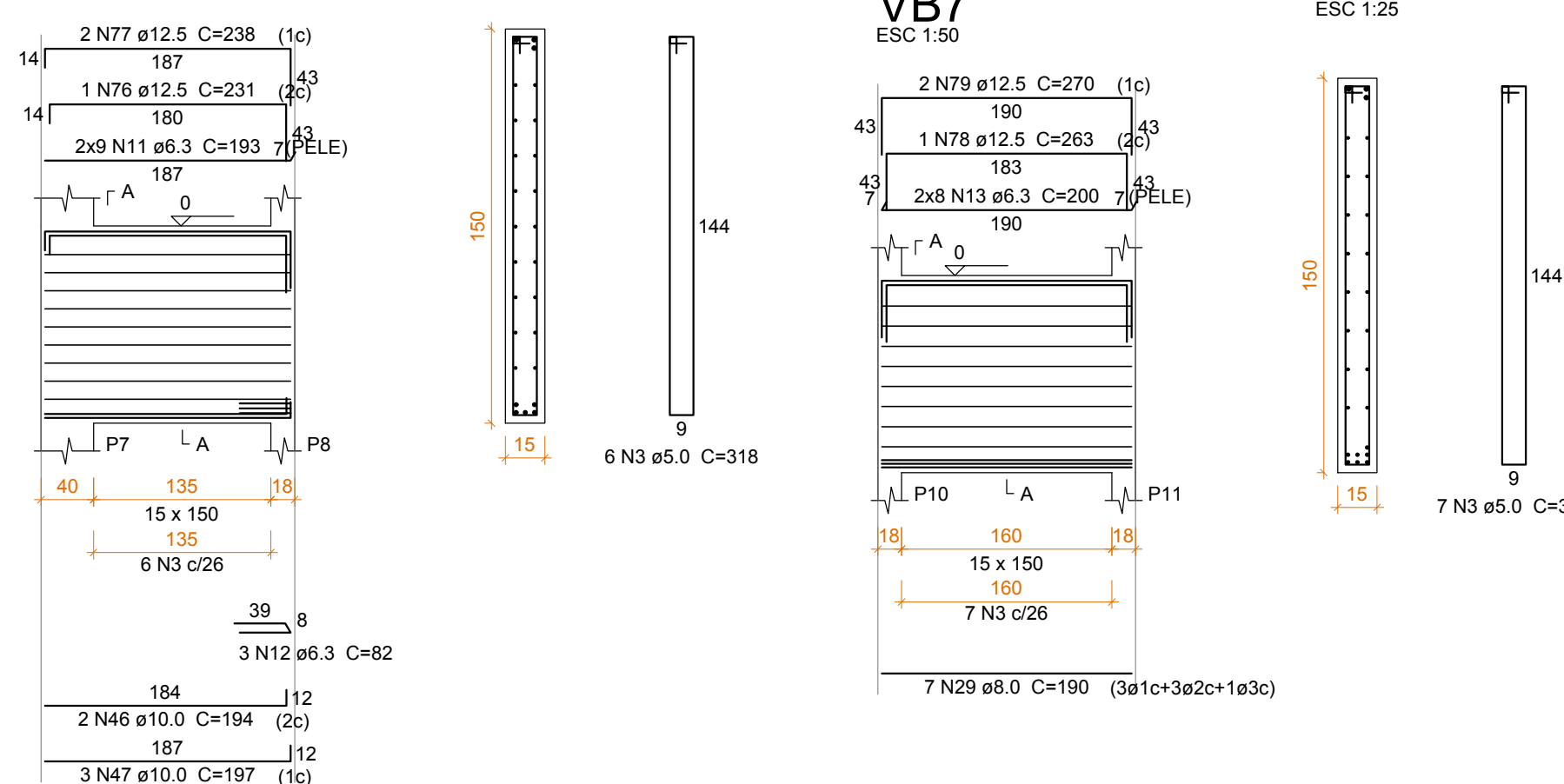
VB18

ESC 1:50



VB4

ESC 1:50

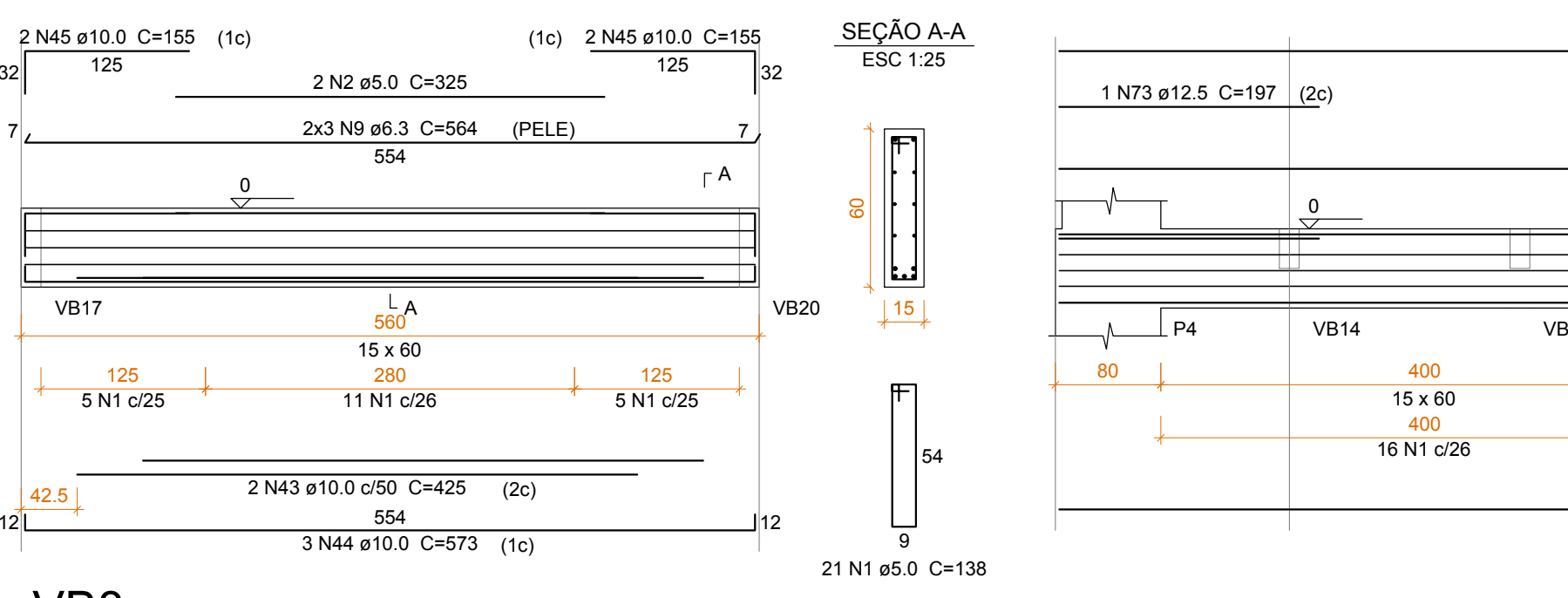


ARMAÇÃO VIGAS BALDRAME

ESCALA 1:50

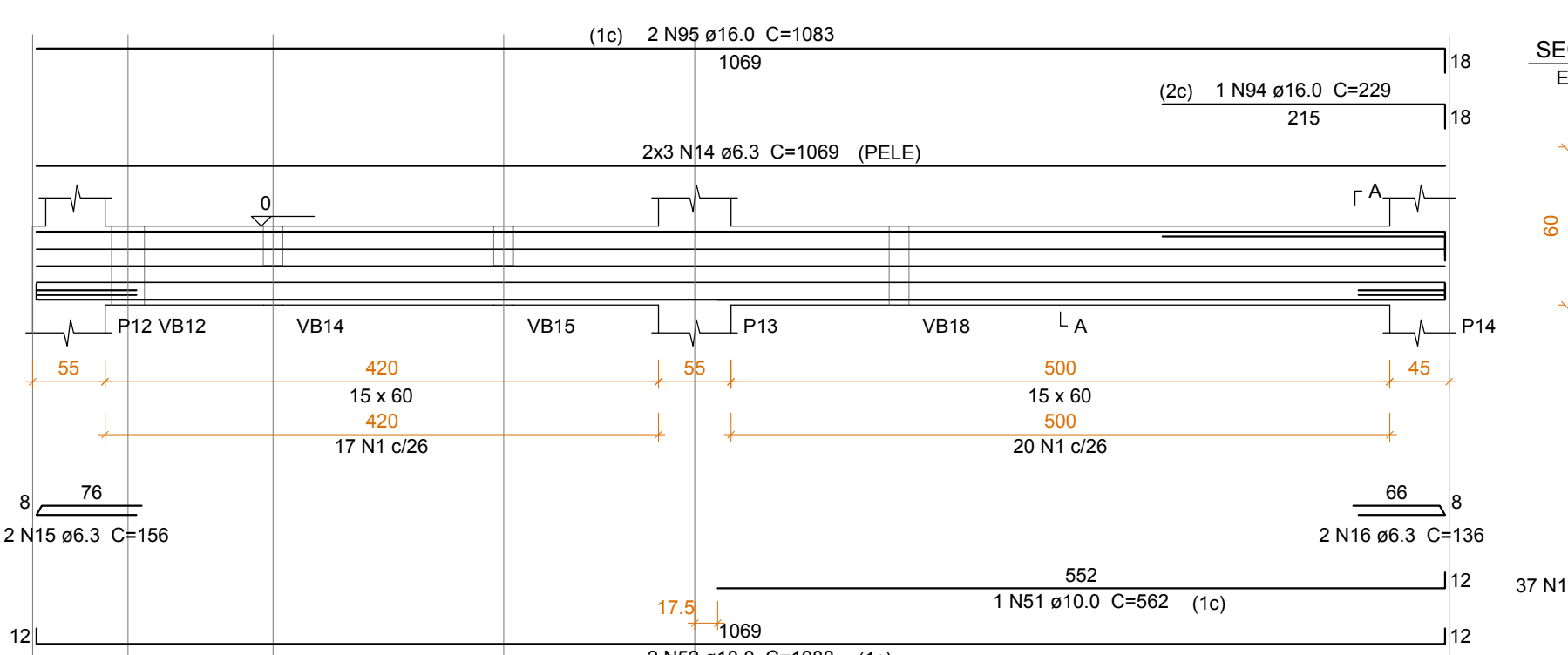
VB2

ESC 1:50



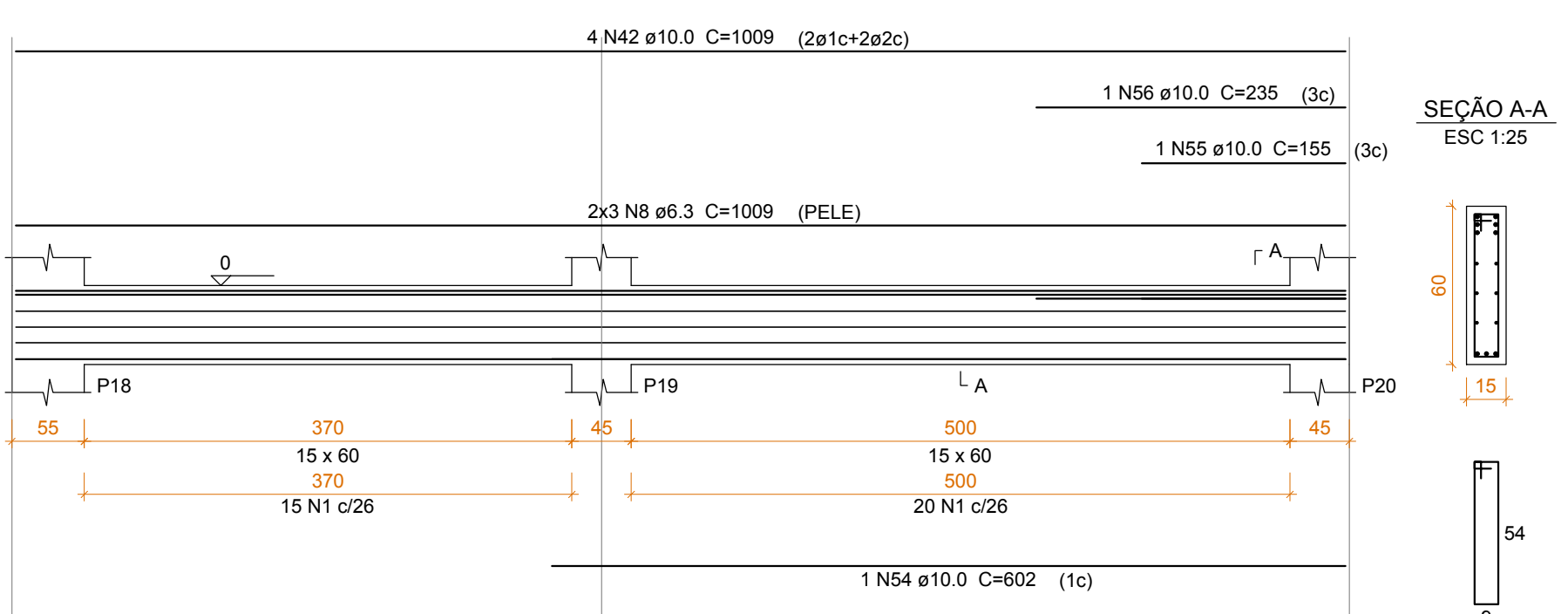
VB8

ESC 1:50



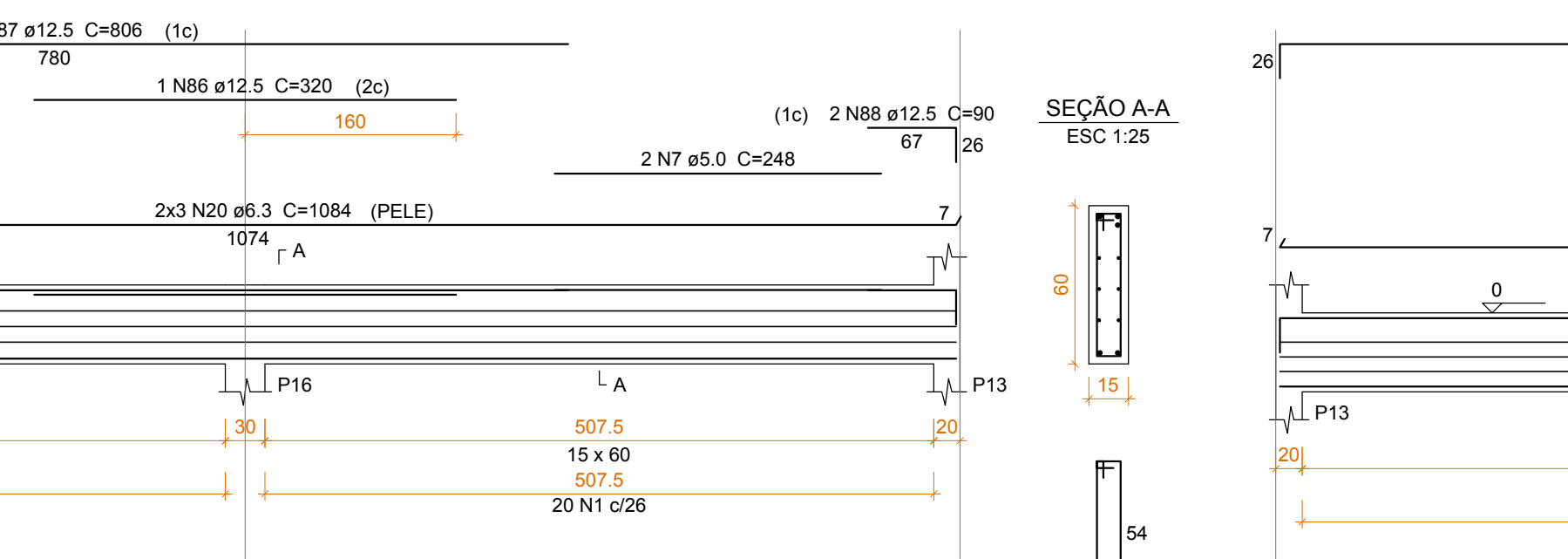
VB10

ESC 1:50



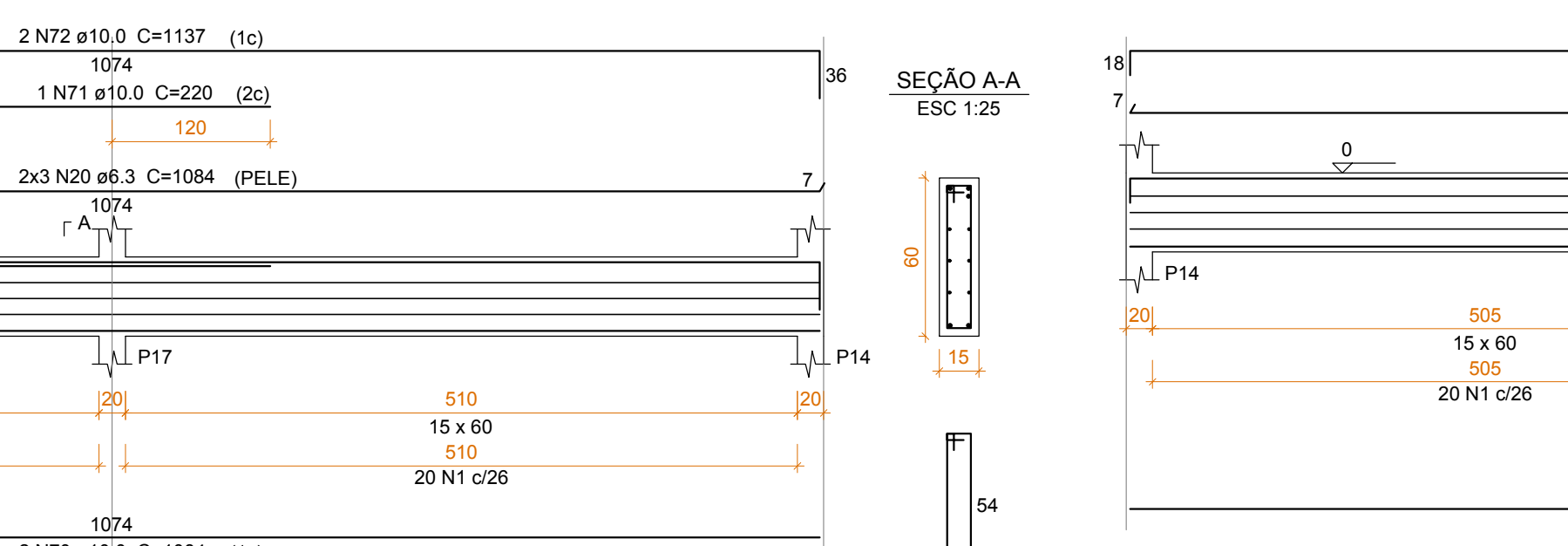
VB17

ESC 1:50



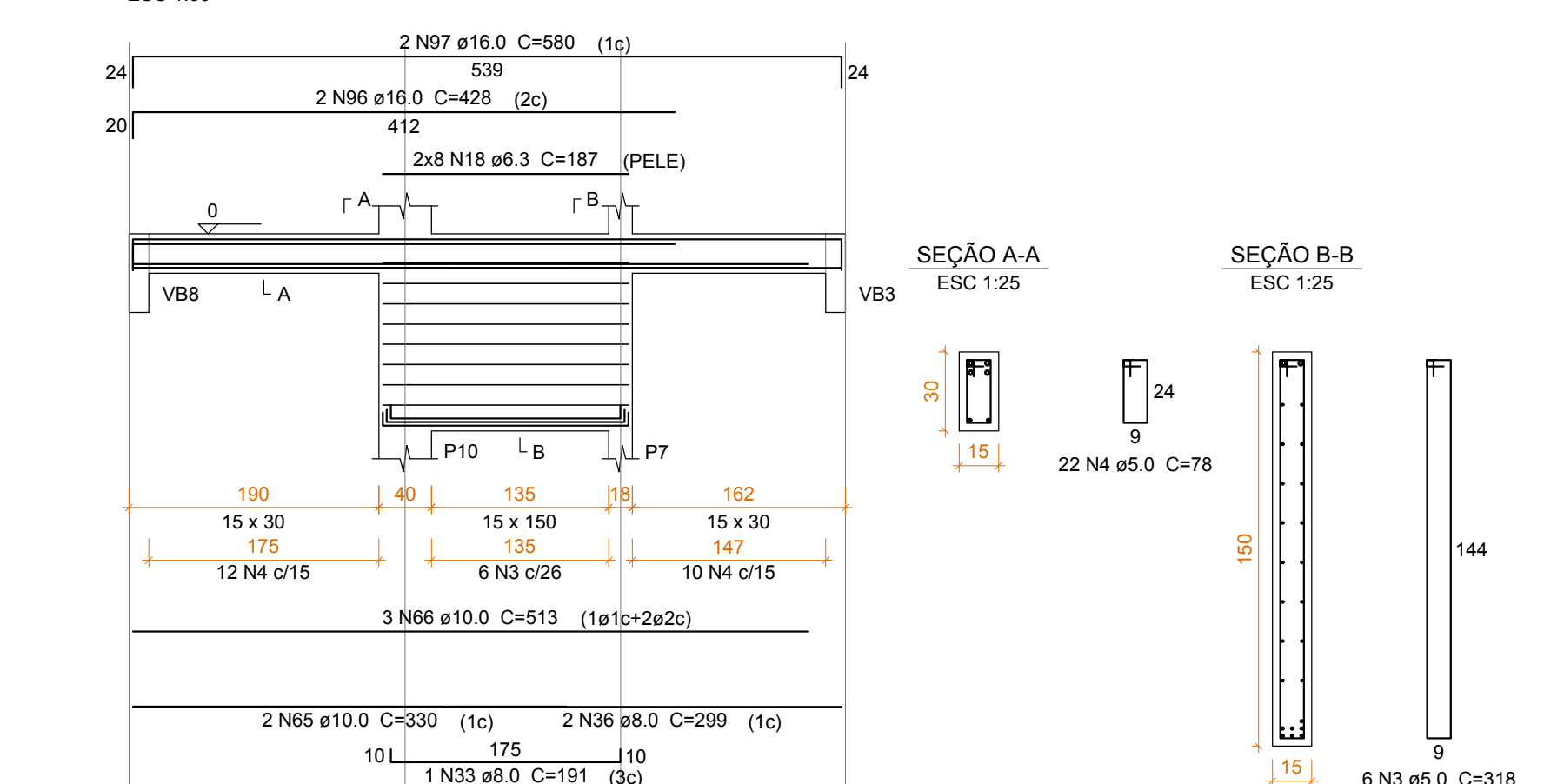
VB19

ESC 1:50



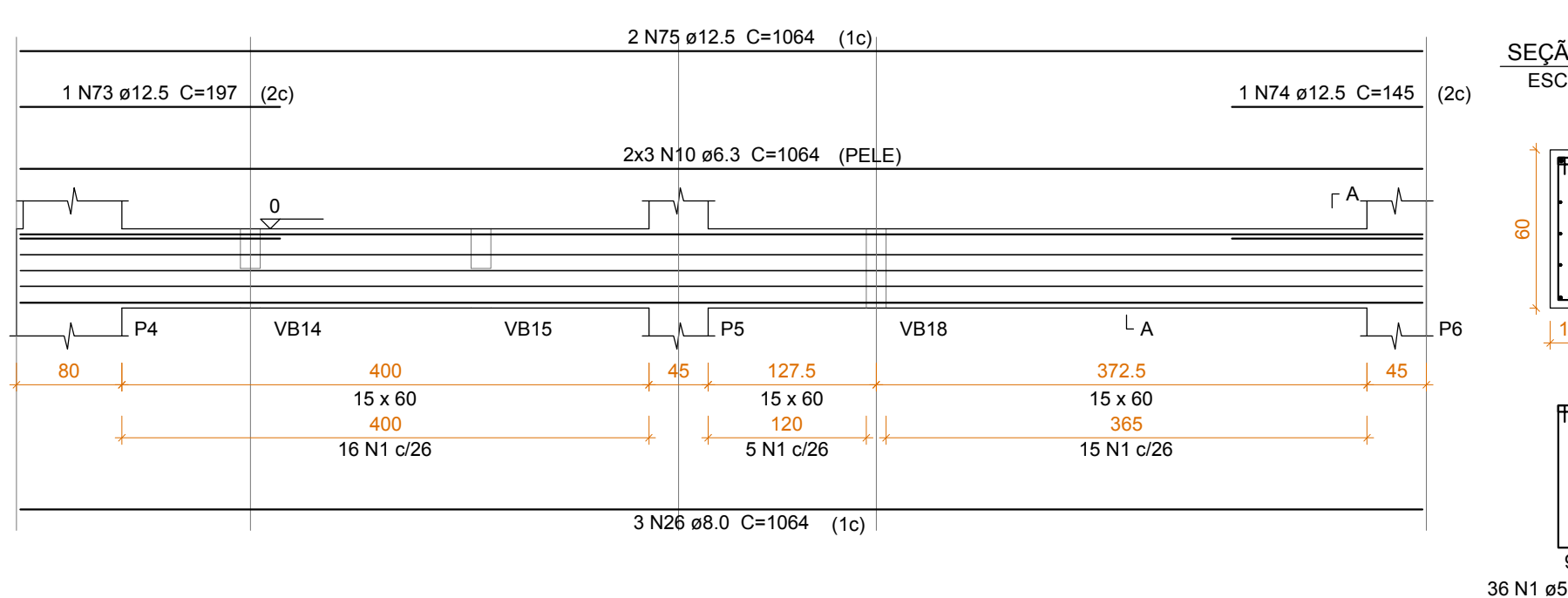
VB14

ESC 1:50



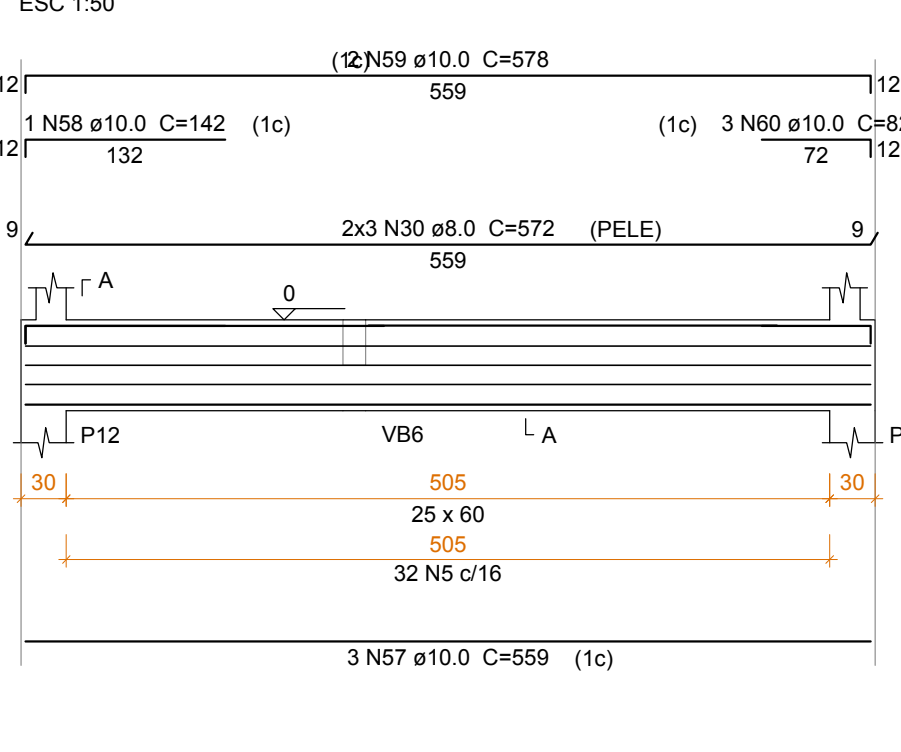
VB3

ESC 1:50



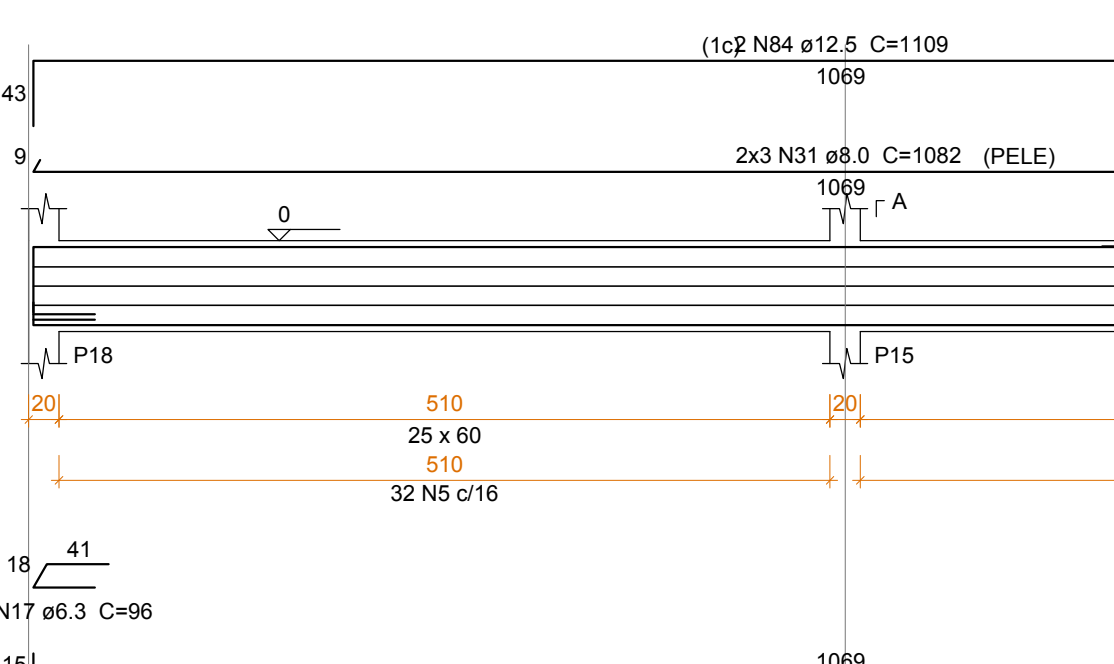
VB11

ESC 1:50



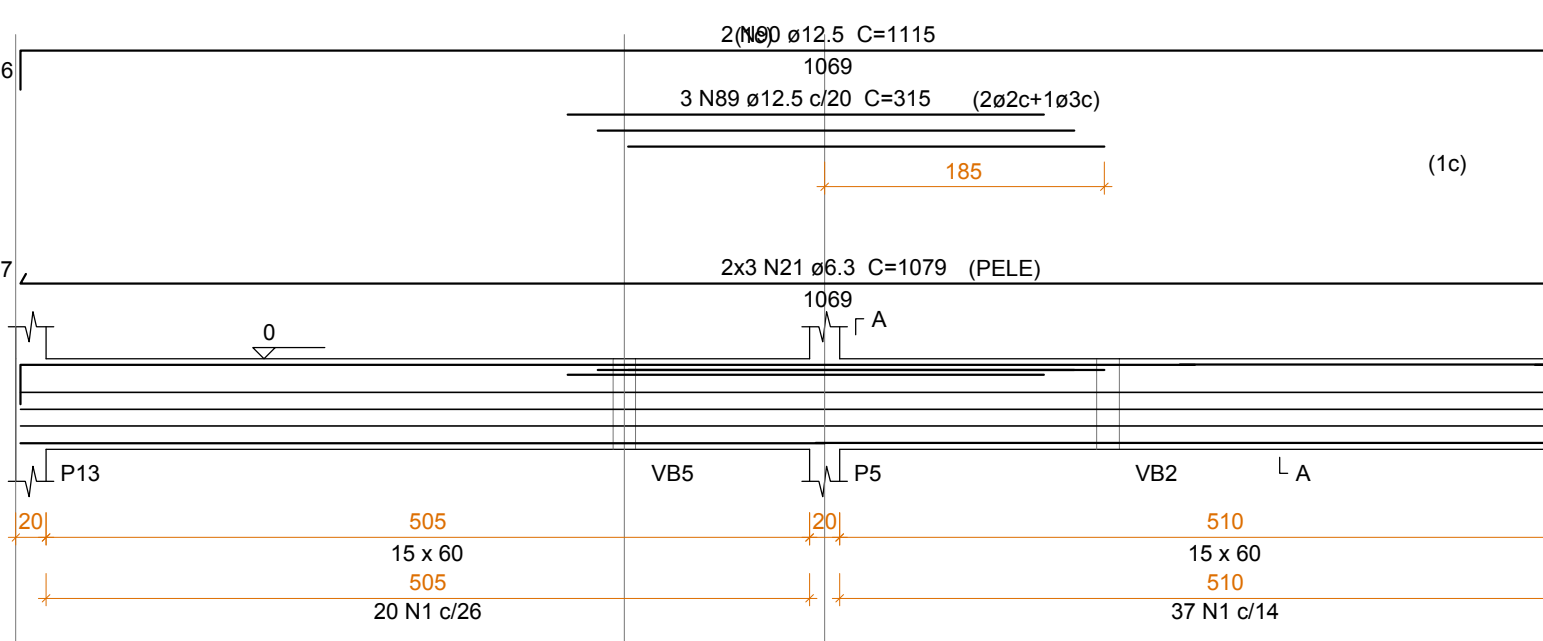
VB12

ESC 1:50



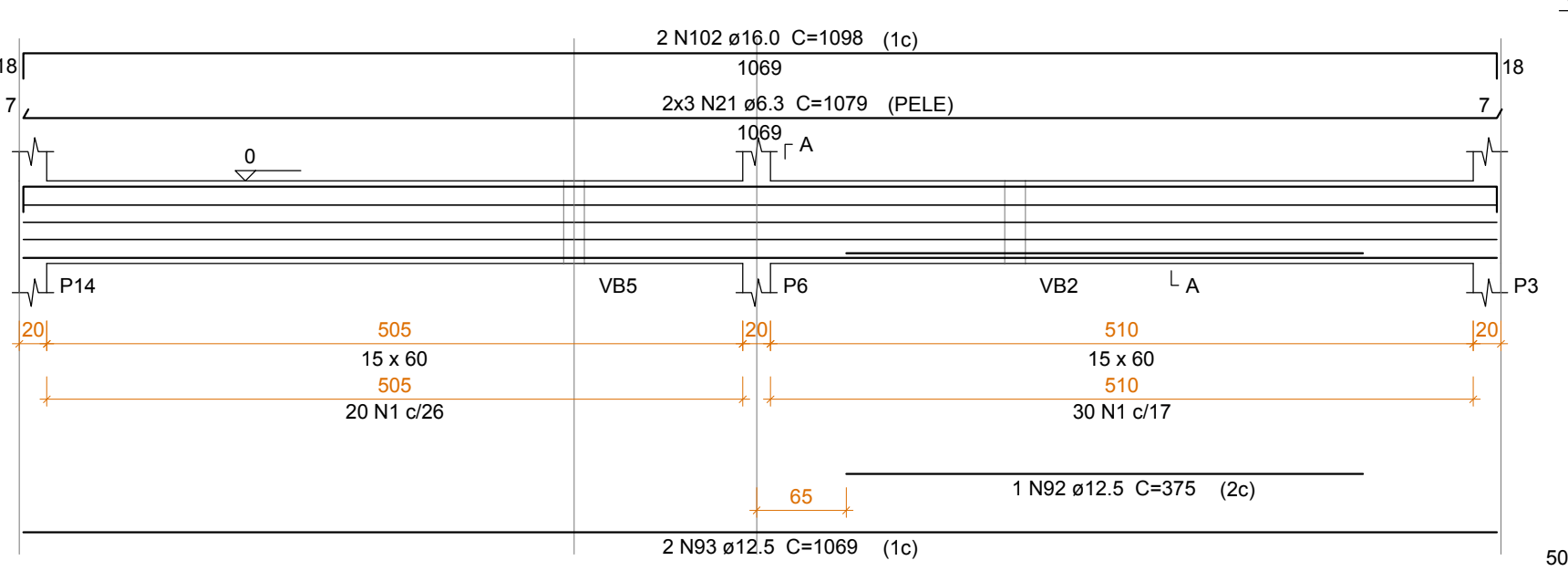
VB17

ESC 1:50



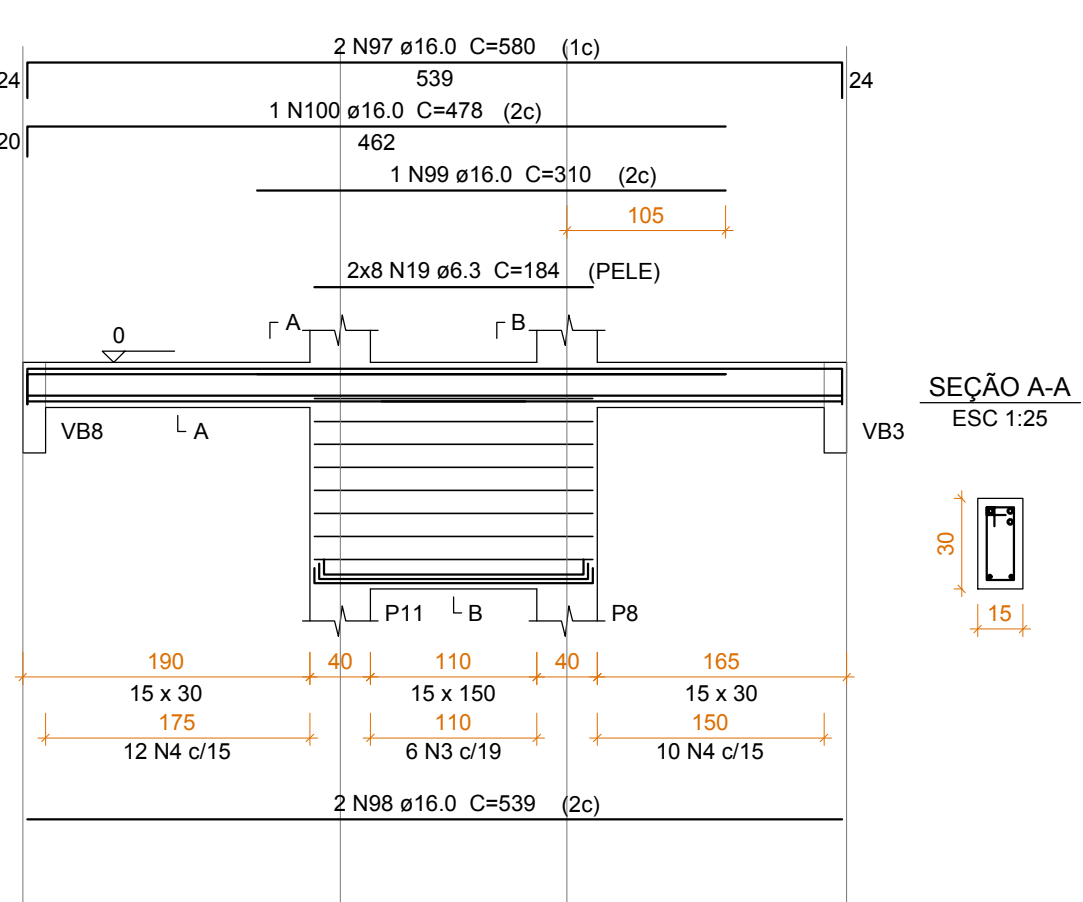
VB20

ESC 1:50



VB15

ESC 1:50



Relação do aço

ACO	N	DIAM (mm)	QUANT	C.UNIT (cm)	C.TOTAL (cm)
CA80	1	5.0	426	138	58788
	2	5.0	2	325	650
	3	5.0	25	318	7950
	4	5.0	54	78	4212
	5	5.0	128	158	20224
	6	5.0	2	425	850
	7	5.0	2	248	496
CA50	8	6.3	18	1009	18162
	9	6.3	12	564	6768
	10	6.3	6	1064	6384
	11	6.3	18	193	3474
	12	6.3	3	82	246
	13	6.3	16	200	3200
	14	6.3	6	1069	6414
	15	6.3	2	156	312
	16	6.3	2	138	272
	17	6.3	2	96	192
	18	6.3	16	187	2992
	19	6.3	16	184	2944
	20	6.3	12	1084	13008
	21	6.3	12	1079	12948
	22	6.3	6	549	3294
	23	8.0	1	295	295
	24	8.0	1	595	595
	25	8.0	2	1009	2018
	26	8.0	3	1064	3192
	27	8.0	2	184	368
	28	8.0	2	214	428
	29	8.0	7	190	1330
	30	8.0	6	572	3432
	31	8.0	6	1082	6492
	32	8.0	6	557	3342
	33	8.0	3	591	1773
	34	8.0	3	197	591
	35	8.0	3	203	609
	36	8.0	2	299	598
	37	8.0	1	188	188
	38	8.0	3	194	582
	39	8.0	3	200	600
	40	10.0	1	590	590
	41	10.0	2	210	420
	42	10.0	10	1009	10090
	43	10.0	2	425	850
	44	10.0	3	573	1719
	45	10.0	4	155	620
	46	10.0	2	194	388
	47	10.0	3	197	591
	48	10.0	2	571	1142
	49	10.0	1	245	245
	50	10.0	2	606	1212
	51	10.0	1	562	562
	52	10.0	2	1088	2176
	53	10.0	1	557	557
	54	10.0	1	602	602
	55	10.0	1	155	155
	56	10.0	1	235	235
	57	10.0	3	559	1677
	58	10.0	1	142	142
	59	10.0	2	578	1156
	60	10.0	3	82	246
	61	10.0	1	375	375
	62	10.0	2	544	1088
	63	10.0	3	106	318
	64	10.0	4	303	1212
	65	10.0	4	330	1320
	66	10.0	3	513	1539
	67	10.0	2	305	610
	68	10.0	2	532	1064
	69	10.0	2	539	1078
	70	10.0	2	1084	2168
	71	10.0	1	220	220
	72	10.0	2	1137	2274
	73	12.5	1	197	197
	74	12.5	1	145	145
	75	12.5	2	1064	2128
	76	12.5	1	231	231
	77	12.5	2	238	476
	78	12.5	1	263	263
	79	12.5	2	270	540
	80	12.5	1	225	225
	81	12.5	1	201	201
	82	12.5	2	1020	2040
	83	12.5	2	1093	2186
	84	12.5	2	1109	2218
	85	12.5	2	1074	2148
	86	12.5	1	320	320
	87	12.5	2	806	1612
	88	12.5	2	90	180
	89	12.5	3	315	945
	90	12.5	2	1115	2230
	91	12.5	2	641	1282
	92	12.5	1	375	375
	93	12.5	2	1069	2138
	94	16.0	1	229	229
	95	16.0	2	1083	2166
	96	16.0	2	428	856
	97	16.0	4	680	2720
	98	16.0	2	539	1078
	99	16.0	1	310	310
	100	16.0	1	478	478
	101	16.0	2	558	1116
	102	16.0	2	1098	2196

Resumo do aço

ACO	DIAM (mm)	C.TOTAL (m)	PESO + 10 % (kg)
CA50	6.3	808.1	617
	8.0	248.6	107.9
	10.0	377.4	255.9
	12.5	220.8	234
	16.0	107.5	186.6
CA80	5.0	931.7	158

PESO TOTAL (kg)

CA50 1001.3

CA80 158

Volume de concreto (C-25) = 15,35 m³

Área de forma = 211,90 m²

1	Revisão 01 - Mudança na Escada	07/2017	RCB
0	Emissão Inicial	06/2017	RCB
Revisão	Descrição	Data	Responsável
AMFRI - ASSOCIAÇÃO DOS MUNICÍPIOS DA REGIÃO DA FOZ DO RIO ITAJAI Rua Luiz Lopes Gonzaga, nº 1655 - Bairro São Vicente - Itajaí-SC - CREA/SC nº 050968-0			
Estado de Santa Catarina BOMBEIRO MILITAR DE SANTA CATARINA			
Projeto		Armação vigas baldrame	
Local		Estática	
Av Sete de Setembro, 1878		Área a construir:	
Bairro Fazenda - Itajaí		870,90m²	
Desenho		Projeto	
Rafael B.		7º Batalhão de Bombeiro Militar em Itajaí / SC	
ART		Comandante do 7º B.B.M.	
Folha		Rafael Calistro Borba	
06/21		Eng Civil - CREA SC 953.243-9	